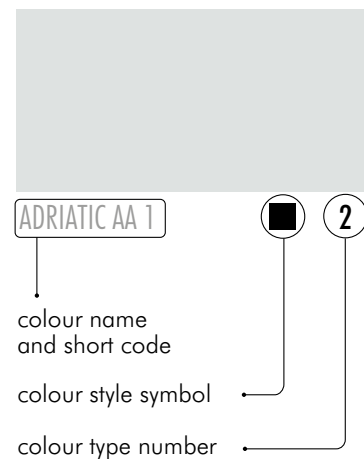


# WATER



## HOW TO READ SYMBOLS



Presented colours palette refers to Ceresit plasters: acrylic, silicate-silicone, silicone, silicate, elastomeric and paints: acrylic, silicone, silicate and elastomeric. Due to printing techniques presented colours of all lines may vary from the original.

We suggest checking the authentic samples in the pattern book. Natural components may cause differences in final appearance of all plasters and paints, it is recommended to apply products with the same production batch number on one surface and working within the same conditions.

|                   |                 |                  |                    |                  |
|-------------------|-----------------|------------------|--------------------|------------------|
| ADRIATIC AA 1 ■ 2 | TAHITI TH 1 ■ 2 | OCEANIA OC 1 ■ 2 | POLYNESIA PS 1 ■ 3 | PACIFIC PC 1 ■ 1 |
| ADRIATIC AA 2 ◆ 3 | TAHITI TH 2 ◆ 3 | OCEANIA OC 2 ■ 3 | POLYNESIA PS 2 ● 3 | PACIFIC PC 2 ◆ 2 |
| ADRIATIC AA 3 ◆ 3 | TAHITI TH 3 ◆ 4 | OCEANIA OC 3 ■ 3 | POLYNESIA PS 3 ● 7 | PACIFIC PC 3 ● 2 |
| ADRIATIC AA 4 ◆ 4 | TAHITI TH 4 ■ 9 | OCEANIA OC 4 ■ 4 | POLYNESIA PS 4 ● 9 | PACIFIC PC 4 ● 3 |
| ADRIATIC AA 5 ◆ 4 | TAHITI TH 5 ■ 9 | OCEANIA OC 5 ■ 4 | POLYNESIA PS 5 ◆ 9 | PACIFIC PC 5 ● 4 |
| ADRIATIC AA 6 ◆ 4 | TAHITI TH 6 ◆ 9 | OCEANIA OC 6 ■ 4 | POLYNESIA PS 6 ■ 9 | PACIFIC PC 6 ● 4 |

|                |                  |                 |                   |                    |                 |                  |                    |                     |
|----------------|------------------|-----------------|-------------------|--------------------|-----------------|------------------|--------------------|---------------------|
| SAMOA SA 1 ● 2 | HAWAII HW 1* ▲ 2 | ALASKA AL 1 ◆ 2 | ATLANTIC AT 1 ▲ 1 | BERMUDAS BM 1* ▲ 2 | ARCTIC AI 1 ■ 1 | AZORES AZ 1* ▲ 2 | LANZAROTE LN 1 ● 1 | ANTARCTICA AN 1 ■ 1 |
| SAMOA SA 2 ▲ 3 | HAWAII HW 2* ▲ 3 | ALASKA AL 2 ● 6 | ATLANTIC AT 2 ◆ 5 | BERMUDAS BM 2* ▲ 2 | ARCTIC AI 2 ■ 5 | AZORES AZ 2* ▲ 2 | LANZAROTE LN 2 ● 5 | ANTARCTICA AN 2 ■ 1 |
| SAMOA SA 3 ▲ 3 | HAWAII HW 3* ▲ 4 | ALASKA AL 3 ■ 3 | ATLANTIC AT 3 ▲ 5 | BERMUDAS BM 3* ▲ 5 | ARCTIC AI 3 ■ 5 | AZORES AZ 3* ▲ 6 | LANZAROTE LN 3 ● 6 | ANTARCTICA AN 3 ◆ 1 |
| SAMOA SA 4 ▲ 7 | HAWAII HW 4* ■ 7 | ALASKA AL 4 ◆ 6 | ATLANTIC AT 4 ● 6 | BERMUDAS BM 4* ▲ 8 | ARCTIC AI 4 ■ 6 | AZORES AZ 4* ▲ 6 | LANZAROTE LN 4 ▲ 6 | ANTARCTICA AN 4 ● 1 |
| SAMOA SA 5 ▲ 9 | HAWAII HW 5* ■ 9 | ALASKA AL 5 ▲ 5 | ATLANTIC AT 5 ● 6 | BERMUDAS BM 5* ▲ 8 | ARCTIC AI 5 ■ 6 | AZORES AZ 5* ▲ 8 | LANZAROTE LN 5 ▲ 8 | ANTARCTICA AN 5 ▲ 5 |
| SAMOA SA 6 ◆ 9 | HAWAII HW 6* ● 9 | ALASKA AL 6 ■ 6 | ATLANTIC AT 6 ● 6 | BERMUDAS BM 6* ● 8 | ARCTIC AI 6 ■ 8 | AZORES AZ 6* ▲ 8 | LANZAROTE LN 6 ▲ 8 | ANTARCTICA AN 6 ● 5 |

# SAND



ARCHITECTS

Colour System

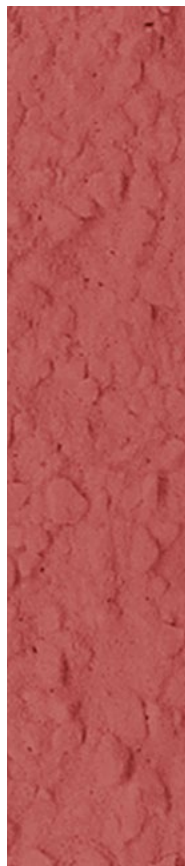
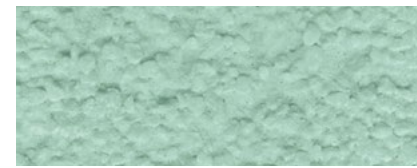
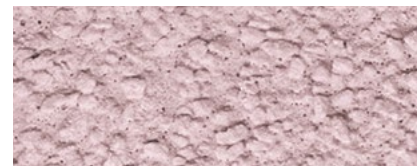
|       |             |
|-------|-------------|
| WATER | <b>SAND</b> |
| EARTH | FOREST      |

|                    |                   |               |                  |                    |                   |                     |                |                 |
|--------------------|-------------------|---------------|------------------|--------------------|-------------------|---------------------|----------------|-----------------|
|                    |                   |               |                  |                    |                   |                     |                |                 |
| BARBADOS BA 1* ▲ 2 | FLORIDA FL 1 ■ 2  | GOA GA 1 ● 2  | PHUKET PK 1* ● 1 | KALAHARI KL 1 ▲ 2  | JAMAICA JM 1 ▲ 1  | MADAGASCAR MG 1 ● 2 | GOBI GB 1 ■ 1  | NAMIB NM 1 ▲ 2  |
|                    |                   |               |                  |                    |                   |                     |                |                 |
| BARBADOS BA 2* ● 3 | FLORIDA FL 2 ▲ 3  | GOA GA 2 ● 3  | PHUKET PK 2 ● 2  | KALAHARI KL 2 ▲ 3  | JAMAICA JM 2 ▲ 2  | MADAGASCAR MG 2 ▲ 3 | GOBI GB 2 ■ 2  | NAMIB NM 2 ▲ 2  |
|                    |                   |               |                  |                    |                   |                     |                |                 |
| BARBADOS BA 3* ● 3 | FLORIDA FL 3 ● 3  | GOA GA 3 ● 3  | PHUKET PK 3 ● 3  | KALAHARI KL 3 ▲ 3  | JAMAICA JM 3 ▲ 3  | MADAGASCAR MG 3 ▲ 3 | GOBI GB 3 ■ 2  | NAMIB NM 3 ▲ 3  |
|                    |                   |               |                  |                    |                   |                     |                |                 |
| BARBADOS BA 4* ● 4 | FLORIDA FL 4* ▲ 3 | GOA GA 4 ● 7  | PHUKET PK 4 ● 3  | KALAHARI KL 4 ▲ 4  | JAMAICA JM 4 ▲ 4  | MADAGASCAR MG 4 ▲ 3 | GOBI GB 4* ▲ 3 | NAMIB NM 4 ▲ 4  |
|                    |                   |               |                  |                    |                   |                     |                |                 |
| BARBADOS BA 5* ● 4 | FLORIDA FL 5* ● 4 | GOA GA 5 ● 7  | PHUKET PK 5 ● 4  | KALAHARI KL 5* ● 4 | JAMAICA JM 5* ▲ 4 | MADAGASCAR MG 5 ▲ 7 | GOBI GB 5* ▲ 4 | NAMIB NM 5 ▲ 4  |
|                    |                   |               |                  |                    |                   |                     |                |                 |
| BARBADOS BA 6* ● 4 | FLORIDA FL 6* ● 4 | GOA GA 6* ● 9 | PHUKET PK 6* ● 4 | KALAHARI KL 6* ● 4 | JAMAICA JM 6* ▲ 4 | MADAGASCAR MG 6 ▲ 7 | GOBI GB 6* ▲ 4 | NAMIB NM 6* ▲ 4 |

|                  |                |                      |                  |                  |                |                |                |                    |
|------------------|----------------|----------------------|------------------|------------------|----------------|----------------|----------------|--------------------|
|                  |                |                      |                  |                  |                |                |                |                    |
| DAKOTA DK 1 ■ 3  | CRETE CT 1 ■ 1 | CALIFORNIA CF 1 ■ 3  | CORSICA CC 1 ● 5 | MAJORCA MJ 1 ● 5 | IBIZA IB 1 ● 2 | MALTA ML 1 ● 5 | ELBA EB 1 ▲ 2  | GALAPAGOS GP 1 ▲ 5 |
|                  |                |                      |                  |                  |                |                |                |                    |
| DAKOTA DK 2 ■ 3  | CRETE CT 2 ■ 2 | CALIFORNIA CF 2 ■ 3  | CORSICA CC 2 ● 5 | MAJORCA MJ 2 ▲ 5 | IBIZA IB 2 ● 6 | MALTA ML 2 ● 5 | ELBA EB 2 ▲ 2  | GALAPAGOS GP 2 ▲ 5 |
|                  |                |                      |                  |                  |                |                |                |                    |
| DAKOTA DK 3 ■ 3  | CRETE CT 3 ■ 3 | CALIFORNIA CF 3 ◆ 3  | CORSICA CC 3 ● 6 | MAJORCA MJ 3 ● 6 | IBIZA IB 3 ● 6 | MALTA ML 3 ● 5 | ELBA EB 3 ▲ 6  | GALAPAGOS GP 3 ▲ 5 |
|                  |                |                      |                  |                  |                |                |                |                    |
| DAKOTA DK 4* ■ 4 | CRETE CT 4 ■ 3 | CALIFORNIA CF 4 ■ 4  | CORSICA CC 4 ● 6 | MAJORCA MJ 4 ▲ 6 | IBIZA IB 4 ● 7 | MALTA ML 4 ● 6 | ELBA EB 4 ▲ 6  | GALAPAGOS GP 4 ▲ 6 |
|                  |                |                      |                  |                  |                |                |                |                    |
| DAKOTA DK 5 ▲ 4  | CRETE CT 5 ■ 7 | CALIFORNIA CF 5 ■ 4  | CORSICA CC 5 ● 8 | MAJORCA MJ 5 ● 6 | IBIZA IB 5 ● 9 | MALTA ML 5 ● 6 | ELBA EB 5 ▲ 7  | GALAPAGOS GP 5 ▲ 8 |
|                  |                |                      |                  |                  |                |                |                |                    |
| DAKOTA DK 6 ● 7  | CRETE CT 6 ■ 4 | CALIFORNIA CF 6* ▲ 4 | CORSICA CC 6 ● 8 | MAJORCA MJ 6 ● 8 | IBIZA IB 6 ● 8 | MALTA ML 6 ● 8 | ELBA EB 6* ▲ 9 | GALAPAGOS GP 6 ● 8 |



|            |              |             |              |                |                |
|------------|--------------|-------------|--------------|----------------|----------------|
|            |              |             |              |                |                |
| PAMPA PM 1 | SAVANNE SV 1 | SAHARA SH 1 | REUNION RN 1 | STROMBOLI ST 1 | SANTORINI SN 1 |
|            |              |             |              |                |                |
| PAMPA PM 2 | SAVANNE SV 2 | SAHARA SH 2 | REUNION RN 2 | STROMBOLI ST 2 | SANTORINI SN 2 |
|            |              |             |              |                |                |
| PAMPA PM 3 | SAVANNE SV 3 | SAHARA SH 3 | REUNION RN 3 | STROMBOLI ST 3 | SANTORINI SN 3 |
|            |              |             |              |                |                |
| PAMPA PM 4 | SAVANNE SV 4 | SAHARA SH 4 | REUNION RN 4 | STROMBOLI ST 4 | SANTORINI SN 4 |
|            |              |             |              |                |                |
| PAMPA PM 5 | SAVANNE SV 5 | SAHARA SH 5 | REUNION RN 5 | STROMBOLI ST 5 | SANTORINI SN 5 |
|            |              |             |              |                |                |
| PAMPA PM 6 | SAVANNE SV 6 | SAHARA SH 6 | REUNION RN 6 | STROMBOLI ST 6 | SANTORINI SN 6 |



# EARTH



|                    |                     |                  |                    |                |                  |                   |                 |                    |
|--------------------|---------------------|------------------|--------------------|----------------|------------------|-------------------|-----------------|--------------------|
|                    |                     |                  |                    |                |                  |                   |                 |                    |
| SCOTLAND SL 1* ▲ 1 | CAPADOCIA CP 1* ◆ 2 | MEXICO MX 1* ▲ 3 | OKLAHOMA OK 1* ◆ 1 | UTAH UT 1 ◆ 3  | ATACAMA AC 1 ■ 2 | INDIANA IN 1 ● 2  | NUBIA NA 1 ■ 3  | CALABRIA CR 1 ● 2  |
|                    |                     |                  |                    |                |                  |                   |                 |                    |
| SCOTLAND SL 2* ● 5 | CAPADOCIA CP 2* ▲ 6 | MEXICO MX 2 ■ 7  | OKLAHOMA OK 2 ● 2  | UTAH UT 2 ◆ 3  | ATACAMA AC 2 ◆ 4 | INDIANA IN 2 ■ 3  | NUBIA NA 2 ■ 7  | CALABRIA CR 2 ● 3  |
|                    |                     |                  |                    |                |                  |                   |                 |                    |
| SCOTLAND SL 3* ▲ 6 | CAPADOCIA CP 3* ▲ 7 | MEXICO MX 3* ■ 7 | OKLAHOMA OK 3 ◆ 3  | UTAH UT 3* ◆ 4 | ATACAMA AC 3 ◆ 4 | INDIANA IN 3* ■ 4 | NUBIA NA 3 ■ 7  | CALABRIA CR 3 ● 3  |
|                    |                     |                  |                    |                |                  |                   |                 |                    |
| SCOTLAND SL 4* ● 7 | CAPADOCIA CP 4* ▲ 7 | MEXICO MX 4* ■ 9 | OKLAHOMA OK 4 ◆ 3  | UTAH UT 4* ◆ 4 | ATACAMA AC 4 ◆ 4 | INDIANA IN 4* ■ 4 | NUBIA NA 4 ■ 9  | CALABRIA CR 4 ● 4  |
|                    |                     |                  |                    |                |                  |                   |                 |                    |
| SCOTLAND SL 5* ▲ 9 | CAPADOCIA CP 5* ■ 7 | MEXICO MX 5* ■ 9 | OKLAHOMA OK 5 ◆ 7  | UTAH UT 5* ◆ 4 | ATACAMA AC 5 ◆ 9 | INDIANA IN 5* ■ 4 | NUBIA NA 5* ■ 9 | CALABRIA CR 5* ● 4 |
|                    |                     |                  |                    |                |                  |                   |                 |                    |
| SCOTLAND SL 6* ▲ 9 | CAPADOCIA CP 6* ■ 9 | MEXICO MX 6* ■ 9 | OKLAHOMA OK 6* ◆ 9 | UTAH UT 6* ◆ 4 | ATACAMA AC 6 ◆ 9 | INDIANA IN 6* ■ 9 | NUBIA NA 6* ◆ 9 | CALABRIA CR 6* ■ 4 |

|                  |                   |                    |                 |                     |                  |                  |                  |                  |
|------------------|-------------------|--------------------|-----------------|---------------------|------------------|------------------|------------------|------------------|
|                  |                   |                    |                 |                     |                  |                  |                  |                  |
| UMBRIA UM 1 ● 2  | ALGARVE AV 1 ● 2  | CATALONIA CN 1 ● 2 | GOMERA GM 1 ● 5 | FORMENTERA FR 1 ● 5 | ASTURIA AS 1 ▲ 5 | GALICIA GL 1 ◆ 5 | MINORCA MN 1 ● 1 | MADEIRA MD 1 ● 1 |
|                  |                   |                    |                 |                     |                  |                  |                  |                  |
| UMBRIA UM 2 ■ 3  | ALGARVE AV 2 ● 2  | CATALONIA CN 2 ● 5 | GOMERA GM 2 ■ 3 | FORMENTERA FR 2 ▲ 5 | ASTURIA AS 2 ◆ 5 | GALICIA GL 2 ▲ 5 | MINORCA MN 2 ■ 5 | MADEIRA MD 2 ● 5 |
|                  |                   |                    |                 |                     |                  |                  |                  |                  |
| UMBRIA UM 3 ● 7  | ALGARVE AV 3 ● 3  | CATALONIA CN 3 ● 6 | GOMERA GM 3 ■ 3 | FORMENTERA FR 3 ■ 6 | ASTURIA AS 3 ◆ 3 | GALICIA GL 3 ◆ 6 | MINORCA MN 3 ■ 5 | MADEIRA MD 3 ● 6 |
|                  |                   |                    |                 |                     |                  |                  |                  |                  |
| UMBRIA UM 4* ■ 9 | ALGARVE AV 4 ● 3  | CATALONIA CN 4 ● 6 | GOMERA GM 4 ◆ 7 | FORMENTERA FR 4 ◆ 7 | ASTURIA AS 4 ◆ 7 | GALICIA GL 4 ◆ 6 | MINORCA MN 4 ● 6 | MADEIRA MD 4 ● 6 |
|                  |                   |                    |                 |                     |                  |                  |                  |                  |
| UMBRIA UM 5* ■ 9 | ALGARVE AV 5* ● 4 | CATALONIA CN 5 ● 7 | GOMERA GM 5 ■ 7 | FORMENTERA FR 5 ◆ 8 | ASTURIA AS 5 ■ 8 | GALICIA GL 5 ◆ 8 | MINORCA MN 5 ■ 8 | MADEIRA MD 5 ● 6 |
|                  |                   |                    |                 |                     |                  |                  |                  |                  |
| UMBRIA UM 6* ■ 9 | ALGARVE AV 6* ● 4 | CATALONIA CN 6 ● 9 | GOMERA GM 6 ◆ 8 | FORMENTERA FR 6 ◆ 9 | ASTURIA AS 6 ◆ 9 | GALICIA GL 6 ◆ 8 | MINORCA MN 6 ■ 8 | MADEIRA MD 6 ● 6 |

# EARTH

|                   |                    |                   |                   |                  |               |                  |                  |                 |
|-------------------|--------------------|-------------------|-------------------|------------------|---------------|------------------|------------------|-----------------|
|                   |                    |                   |                   |                  |               |                  |                  |                 |
| COLUMBIA CL 1 ▲ 1 | PATAGONIA PT 1 ■ 5 | ICELAND IC 1* ■ 1 | TENERIFE TN 1 ■ 1 | ARIZONA AR 1 ● 2 | FUJI FJ 1 ▲ 1 | NEVADA NV 1 ● 2  | YUCATAN YC 1 ● 5 | AFRICA AF 1 ▲ 1 |
|                   |                    |                   |                   |                  |               |                  |                  |                 |
| COLUMBIA CL 2 ● 5 | PATAGONIA PT 2 ● 5 | ICELAND IC 2* ▲ 1 | TENERIFE TN 2 ■ 5 | ARIZONA AR 2 ■ 6 | FUJI FJ 2 ■ 2 | NEVADA NV 2 ● 3  | YUCATAN YC 2 ● 2 | AFRICA AF 2 ▲ 2 |
|                   |                    |                   |                   |                  |               |                  |                  |                 |
| COLUMBIA CL 3 ● 6 | PATAGONIA PT 3 ◆ 6 | ICELAND IC 3 ● 5  | TENERIFE TN 3 ■ 5 | ARIZONA AR 3 ■ 6 | FUJI FJ 3 ■ 3 | NEVADA NV 3* ● 3 | YUCATAN YC 3 ● 3 | AFRICA AF 3 ● 6 |
|                   |                    |                   |                   |                  |               |                  |                  |                 |
| COLUMBIA CL 4 ■ 6 | PATAGONIA PT 4 ■ 6 | ICELAND IC 4 ■ 6  | TENERIFE TN 4 ▲ 6 | ARIZONA AR 4 ■ 6 | FUJI FJ 4 ■ 3 | NEVADA NV 4 ● 3  | YUCATAN YC 4 ● 6 | AFRICA AF 4 ● 3 |
|                   |                    |                   |                   |                  |               |                  |                  |                 |
| COLUMBIA CL 5 ● 8 | PATAGONIA PT 5 ■ 8 | ICELAND IC 5 ▲ 8  | TENERIFE TN 5 ▲ 6 | ARIZONA AR 5 ● 5 | FUJI FJ 5 ■ 3 | NEVADA NV 5 ■ 7  | YUCATAN YC 5 ● 6 | AFRICA AF 5 ● 6 |
|                   |                    |                   |                   |                  |               |                  |                  |                 |
| COLUMBIA CL 6 ● 8 | PATAGONIA PT 6 ■ 8 | ICELAND IC 6* ▲ 8 | TENERIFE TN 6 ▲ 6 | ARIZONA AR 6 ■ 6 | FUJI FJ 6 ■ 3 | NEVADA NV 6 ◆ 8  | YUCATAN YC 6 ● 8 | AFRICA AF 6 ■ 8 |

|                |                   |                    |                    |
|----------------|-------------------|--------------------|--------------------|
|                |                   |                    |                    |
| TEXAS TX 1 ▲ 2 | COLORADO CO 1 ● 3 | ANDALUSIA AD 1 ■ 2 | ZANZIBAR ZN 1* ■ 1 |
|                |                   |                    |                    |
| TEXAS TX 2 ● 3 | COLORADO CO 2 ● 6 | ANDALUSIA AD 2 ▲ 2 | ZANZIBAR ZN 2* ■ 1 |
|                |                   |                    |                    |
| TEXAS TX 3 ● 3 | COLORADO CO 3 ● 6 | ANDALUSIA AD 3 ▲ 3 | ZANZIBAR ZN 3* ■ 1 |
|                |                   |                    |                    |
| TEXAS TX 4 ● 6 | COLORADO CO 4 ● 6 | ANDALUSIA AD 4 ▲ 3 | ZANZIBAR ZN 4* ● 1 |
|                |                   |                    |                    |
| TEXAS TX 5 ● 6 | COLORADO CO 5 ▲ 5 | ANDALUSIA AD 5 ● 7 | ZANZIBAR ZN 5* ● 1 |
|                |                   |                    |                    |
| TEXAS TX 6 ■ 8 | COLORADO CO 6 ▲ 6 | ANDALUSIA AD 6 ▲ 7 | ZANZIBAR ZN 6* ■ 1 |

# FOREST



ARCHITECTS

Colour System

|       |        |
|-------|--------|
| WATER | SAND   |
| EARTH | FOREST |

|              |              |              |               |               |              |                |            |           |
|--------------|--------------|--------------|---------------|---------------|--------------|----------------|------------|-----------|
| FLORES FS 1  | CEYLON CY 1  | BORNEO BR 1  | SUMATRA SM 1  | CELEBES CS 1  | OREGON OR 1* | TASMANIA TS 1* | PAPUA PP 1 | JAVA JV 1 |
| FLORES FS 2  | CEYLON CY 2  | BORNEO BR 2  | SUMATRA SM 2* | CELEBES CS 2  | OREGON OR 2* | TASMANIA TS 2  | PAPUA PP 2 | JAVA JV 2 |
| FLORES FS 3  | CEYLON CY 3  | BORNEO BR 3* | SUMATRA SM 3* | CELEBES CS 3  | OREGON OR 3* | TASMANIA TS 3* | PAPUA PP 3 | JAVA JV 3 |
| FLORES FS 4  | CEYLON CY 4* | BORNEO BR 4* | SUMATRA SM 4* | CELEBES CS 4* | OREGON OR 4* | TASMANIA TS 4* | PAPUA PP 4 | JAVA JV 4 |
| FLORES FS 5  | CEYLON CY 5* | BORNEO BR 5* | SUMATRA SM 5* | CELEBES CS 5* | OREGON OR 5* | TASMANIA TS 5* | PAPUA PP 5 | JAVA JV 5 |
| FLORES FS 6* | CEYLON CY 6* | BORNEO BR 6* | SUMATRA SM 6* | CELEBES CS 6* | OREGON OR 6* | TASMANIA TS 6* | PAPUA PP 6 | JAVA JV 6 |

|             |              |              |               |               |           |               |
|-------------|--------------|--------------|---------------|---------------|-----------|---------------|
| TUNDRA TD 1 | TOSKANA TK 1 | MONTANA MT 1 | VIRGINIA VR 1 | SIBERIA SI 1  | ETNA ET 1 | NEBRASKA NB 1 |
| TUNDRA TD 2 | TOSKANA TK 2 | MONTANA MT 2 | VIRGINIA VR 2 | SIBERIA SI 2  | ETNA ET 2 | NEBRASKA NB 2 |
| TUNDRA TD 3 | TOSKANA TK 3 | MONTANA MT 3 | VIRGINIA VR 3 | SIBERIA SI 3  | ETNA ET 3 | NEBRASKA NB 3 |
| TUNDRA TD 4 | TOSKANA TK 4 | MONTANA MT 4 | VIRGINIA VR 4 | SIBERIA SI 4  | ETNA ET 4 | NEBRASKA NB 4 |
| TUNDRA TD 5 | TOSKANA TK 5 | MONTANA MT 5 | VIRGINIA VR 5 | SIBERIA SI 5* | ETNA ET 5 | NEBRASKA NB 5 |
| TUNDRA TD 6 | TOSKANA TK 6 | MONTANA MT 6 | VIRGINIA VR 6 | SIBERIA SI 6  | ETNA ET 6 | NEBRASKA NB 6 |